



U.S. ARMY

# U.S. ARMY CORPS OF ENGINEERS

## LOUISVILLE DISTRICT



## FORMER CAMP GRANT



### LOCATION

The Formerly Used Defense Site (FUDS) Camp Grant is located in the southern section of Rockford, Illinois in Winnebago County, near the intersection of state route 2 and U.S. Highway 20 between the Rock River and State Route 251 (formerly known as State Route 51). The majority of the camp was contained within Sections 11, 12, 13, 14, 15, 22, 23, and 24, Township 43 North, Range 1 East of the 3rd Principal Meridian.



### SITE HISTORY

The War Department acquired 3,358.06 acres from private owners to establish Camp Grant—3,313.82 purchased acres, 3.64 acres acquired by easement, and 40.60 leased acres between 1914 and 1919.

The U.S. Army used the site to train ground troops during World War I and World War II. Between 1914 and 1919, the Army built hundreds of buildings, most demolished between 1922 and 1924. From 1924 to 1941, it was used by the Illinois National Guard and the Civilian Conservation Corps (CCC). Several more structures were built. In the 1940s, the Army added a hospital, a prisoner of war camp, and runways.

Camp Grant was deactivated in the mid-1940s. On October 16, 1946, the War Assets Administration (WAA) assumed responsibility for the site. Between 1947 and 1956, the land was sold and all easements ended. Around 1,345 acres were given to the City of Rockford, Illinois, via quitclaim deed to be used as a public airport (now known as the Rockford International Airport).

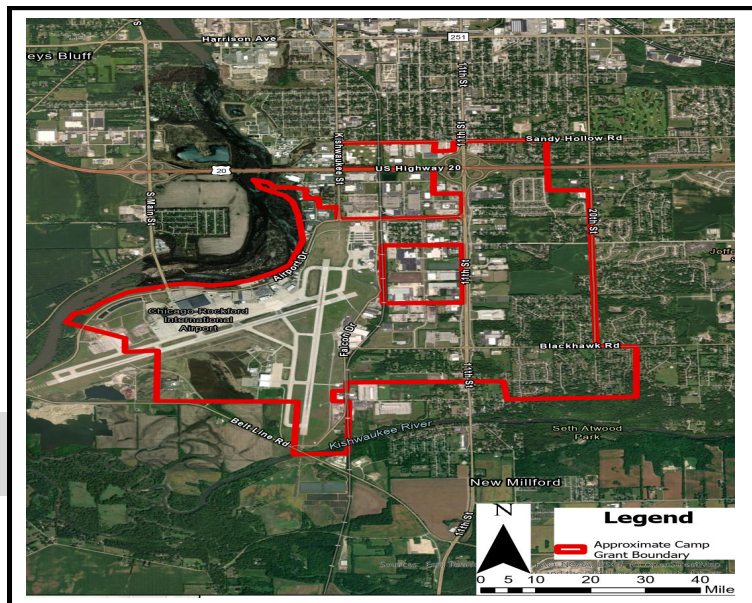


### PRELIMINARY ASSESSMENT

Under the FUDS program, the Department of Defense remediates properties that have been determined to have been owned by, leased to, or otherwise possessed by the United States and under the jurisdiction of the Secretary, including governmental entities that are the legal predecessors of DoD or its Components. These properties were transferred from DoD control prior to 17 October 1986, and where one or more release or threatened releases of hazardous substances could exist on the property as a result of DoD activities that occurred on the property prior to 17 October 1986. Cleanup of any DoD contamination found would be completed at no cost to the property owner.

At this time (FY 25/26), the U.S. Army Corps of Engineers (USACE) is performing a preliminary investigation at the former Camp Grant. The outcome of the investigation will be a report called the Preliminary Assessment, which is the initial stage of evaluating a site to determine if it needs further investigation or cleanup under the Comprehensive Environmental Response, Compensation, and Liability Act (CERCLA). This assessment is a fact-finding process that typically consists of a site visit/visual inspection, research of historical records, review of recorded deeds, easements, geologic and topographic characteristics, aerial photographs of the site, well locations and interviews, to assess the former FUDS property as well as the surrounding area.

Where access to non-Federal property is required to complete the evaluation, a Right of Entry (ROE) is requested to allow government entry to enter the property to perform the Preliminary Assessment. A ROE is permission by the landowner for the government to enter onto the property for a specified purpose. If the determination is made that additional investigation is warranted, USACE would seek to obtain additional ROEs from each respective property owner.



**APPROX. FUDS PROPERTY BOUNDARY**

**CONTACT:**



Valerie Doss  
valerie.j.doss@usace.army.mil



502-315-6108  
502-682-0611